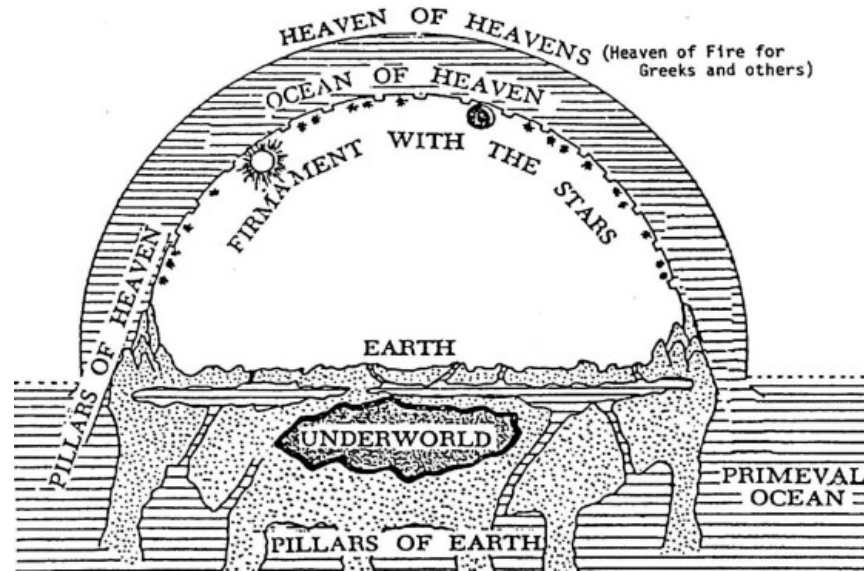
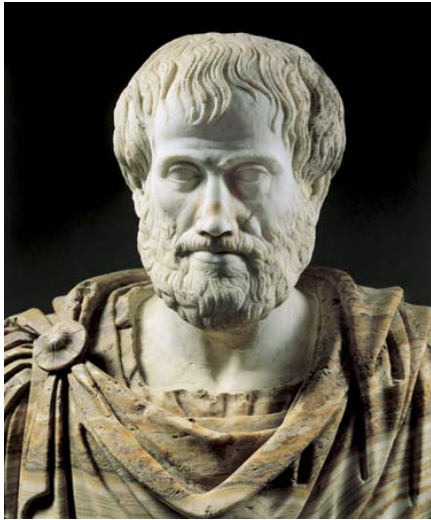


The Flat World Cosmolgy



- All ancient, pre-scientific civilizations envisioned a flat earth
- The spherical earth concept first developed in Greek astronomy with Pythagoras
- Most pre-Socratic philosophers held on to their flat world model



Aristotle endorses a round earth

- The semi-circular shadow cast during an eclipse
- The descent of ships as they sail away
- The sun rising and setting at different times
- The size of a shadow depending on latitude
- Liquids clump into spherical shapes

Until 1849 when...

Samuel Birley Rowbotham (1816-1884)
announced:

ZETETIC ASTRONOMY.
EARTH NOT A GLOBE
"PARALLAX."
Author of "Zetetic Astronomy," "Introduction of Modern Astronomy," and other scientific works, and of the Letters on the "Figure of the Earth," in the Liverpool Mercury, South British Mail, Dublin Commercial Journal, Manchester Guardian, and other Journals, and Author likewise of

THREE LECTURES,
TO BE ILLUSTRATED BY NUMEROUS DIAGRAMMS AND EXPERIMENTS,
On the Evenings of Thursday, Friday, and Saturday, March 10, 11, and 12, 1870,
IN THE
LECTURE HALL, DEPTFORD.

The sum of £500 has been offered by John Hampden, Esq., of Swindon, Wilt., and a like sum by a Fellow of the Royal Geographical Society, and the £1,000 deposited in Credit's Bank, to be paid on the result of an experiment to test the Rotundity of the Earth on or before the 16th March inst. Particulars will be given in the next Lecture.

**After initial embarrassment
Rowbotham honed his debating and
presentation skills to a high level
delivering convincing lectures with wit
and humor.**

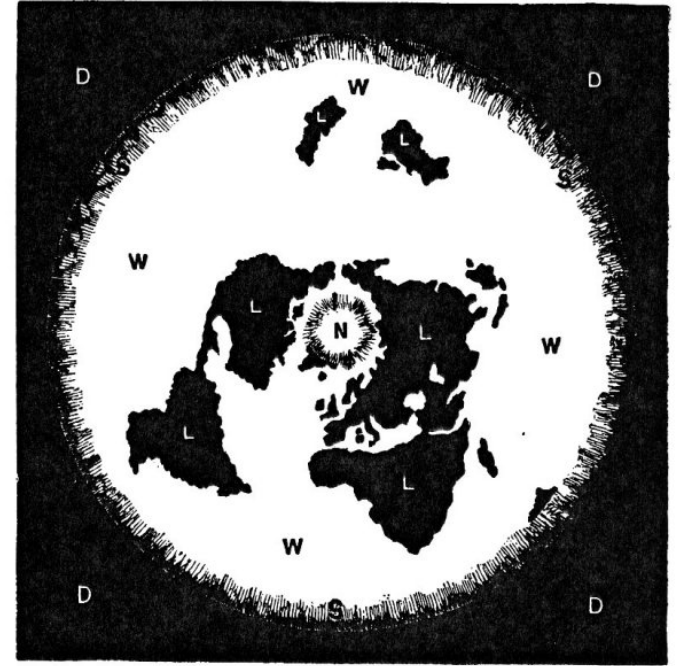
**He steamrolled all opponents by
appealing to**

- **Common sense**
- **Many examples that seem to confirm flatness**
- **Frequent reference to the Bible**



Rowbotham's World

- The earth is flat
- Continents float on ocean
- Ocean over layer of fire
- Known world surrounded by expanse of snow and ice
- Bordered by giant “ice cliff”
- North Pole center of earth
- The sun, moon, planets and stars are a few hundred miles above surface of earth
- The sun orbits the North Pole at constant altitude
- The moon glows on its own
- Eclipses caused by unknown objects occulting the sun or moon



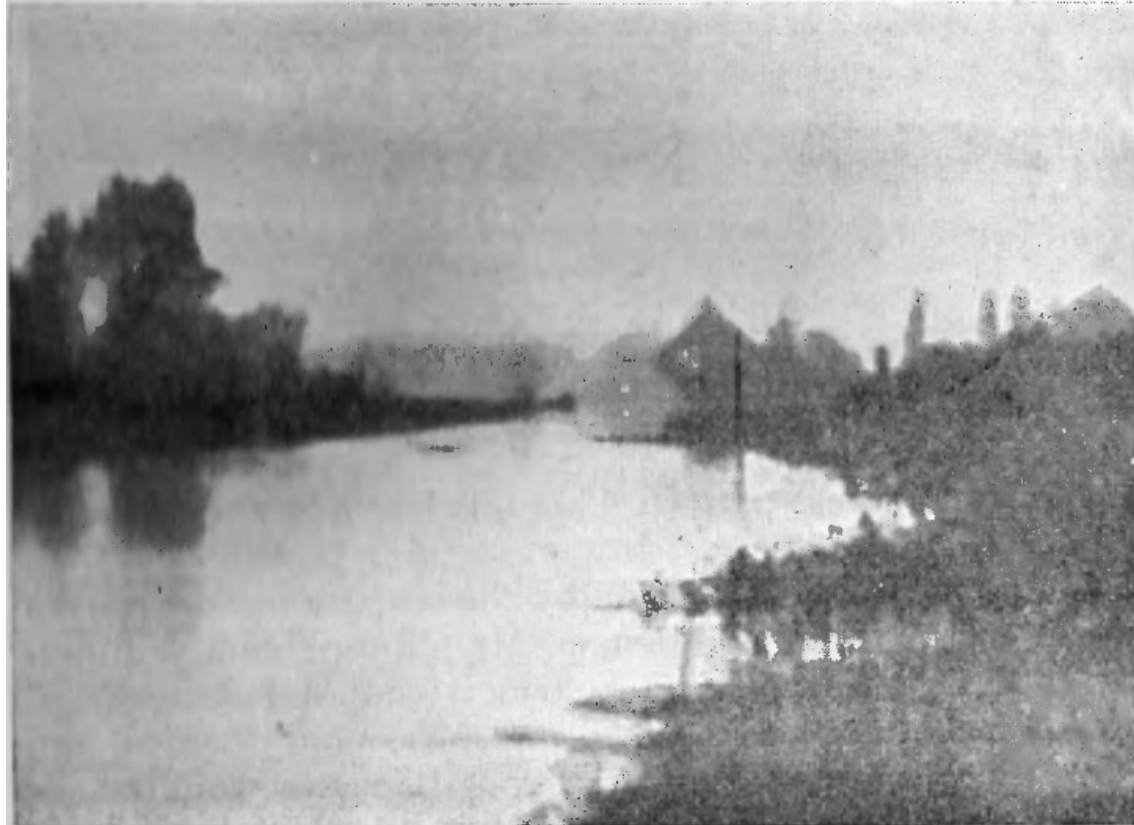
The Bedford Level Experiments

The Bedford waterway was a slow flowing drainage canal of the Old Bedford River that ran unobstructed in a straight line for 6 miles

- **First series of observations made by Rowbotham in 1838**
- **From 1838 to 1904 this was the site to debunk or verify Rowbotham's claim**
- **Mixed results with initial results seeming to verify a flat earth**
- **By turn of century the tide had turned**

Then

On May 11, 1904 Lady Elizabeth Blount, founder of *Universal Zetetic Society* hired a photographer and took following picture:



After World War I, The society went into a slow decline until

Samuel Shenton founded *The International Flat Earth Society* in 1956

Shenton's world very similar to Rowbotham's

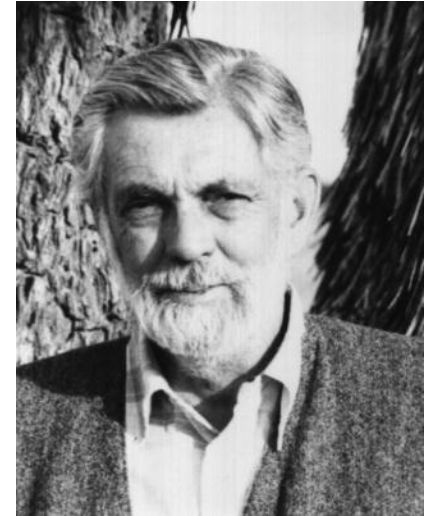
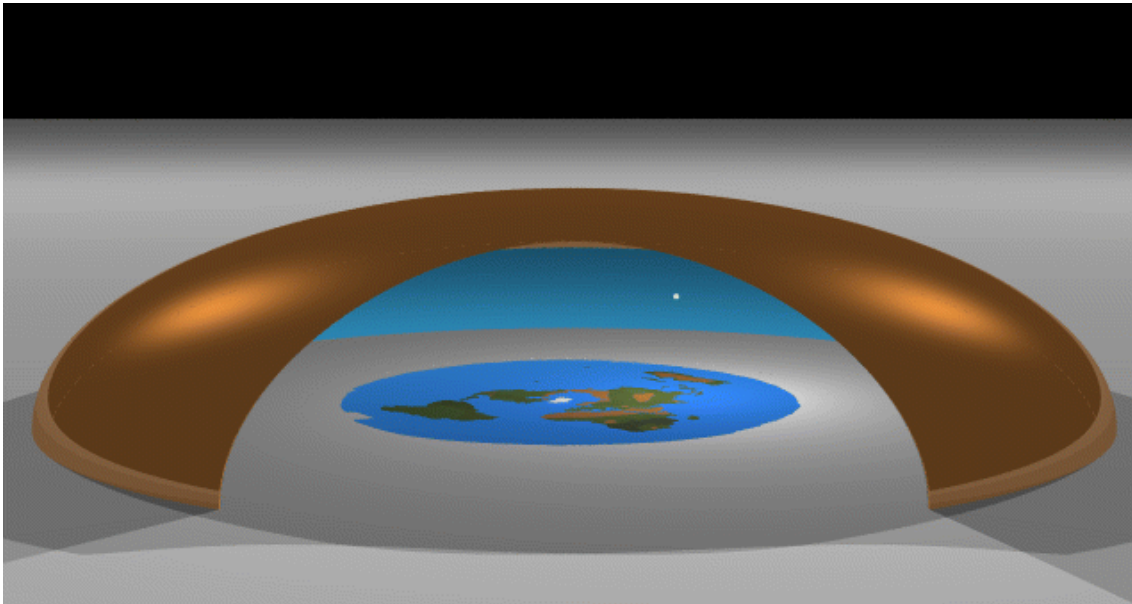
- Sun and moon are 3000 miles above the ground
- The firmament is 3100 miles
- The sun and moon are 32 miles in diameter

Attracted wide attention by claiming the Apollo moon landing was a hoax staged by Hollywood.



The International Flat Earth Society of America

- Established 1972 by Charles K. Johnson
- Elites conspiracy
- Society grew to 3000 paying members



Charles K. Johnson
1924-2001

